

Sechskant-Kappe - 326

ähnl. DIN EN 10241 / ISO 4144 (DIN 2991),

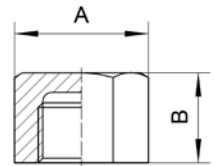
Rp-DIN EN 10226-1 / ISO 7-1

Hexagon cap - 326

similar to DIN EN 10241 / ISO 4144 (DIN 2991),

Rp-DIN EN 10266-1 / ISO 7-1

| Abm./Dim. | A mm | B mm | Kg/Stk/pc | AISI 316 |
|-----------|--------|-------|-----------|----------------------------|
| | | | | Artikel-Nr. Article-No. |
| 1/8" | 12,50 | 11,80 | 0,015 | ● 24121 |
| 1/4" | 16,00 | 15,00 | 0,022 | ● 24122 |
| 3/8" | 19,50 | 15,40 | 0,030 | ● 24123 |
| 1/2" | 24,00 | 17,10 | 0,042 | ● 24124 |
| 3/4" | 29,50 | 18,50 | 0,055 | ● 24125 |
| 1" | 36,50 | 21,00 | 0,100 | ● 24126 |
| 1 1/4" | 45,50 | 23,70 | 0,156 | ● 24127 |
| 1 1/2" | 52,00 | 23,70 | 0,188 | ● 24128 |
| 2" | 64,00 | 27,50 | 0,290 | ● 24129 |
| 2 1/2" | 81,00 | 31,70 | 0,500 | ● 24130 |
| 3" | 94,50 | 35,10 | 0,680 | ● 24131 |
| 4" | 120,50 | 41,60 | 1,520 | ● 29964 |



Sechskant-Kappe - 426

ähnl. DIN EN 10241,

Rp-DIN EN 10226-1 / ISO 7-1

Hexagon cap - 426

similar to DIN EN 10241,

Rp-DIN EN 10226-1 / ISO 7-1

| Abm./Dim. | A mm | B mm | Kg/Stk/pc | AISI 316 |
|-----------|-------|-------|-----------|----------------------------|
| | | | | Artikel-Nr. Article-No. |
| 1/8" | 14,00 | 13,00 | 0,016 | ● 35420 |
| 1/4" | 19,00 | 16,00 | 0,028 | ● 35419 |
| 3/8" | 22,00 | 17,00 | 0,035 | ● 35426 |
| 1/2" | 27,00 | 20,00 | 0,063 | ● 35418 |
| 3/4" | 32,00 | 22,00 | 0,085 | ● 35425 |
| 1" | 41,00 | 24,00 | 0,175 | ● 35423 |
| 1 1/4" | 50,00 | 27,00 | 0,332 | ● 35422 |
| 1 1/2" | 55,00 | 27,00 | 0,542 | ● 35421 |
| 2" | 70,00 | 32,00 | 0,650 | ● 35424 |

