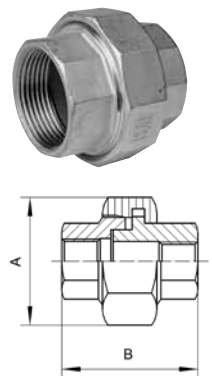


Verschraubung - 311 I/I
 ähnl. DIN EN 10241 / ISO 4144 (DIN 2993), flach dichtend,
 beidseitig Innengewinde, Rp-DIN EN 10226-1 / ISO 7-1
 Union - 311 f/f
 similar to DIN EN 10241 / ISO 4144 (DIN 2993), flat sealing,
 female thread on both sides, Rp-DIN EN 10226-1 / ISO 7-1

Abm./Dim.	A mm	B mm	Kg/Paar/pc	AISI 316
				Artikel-Nr. Article-No.
1/8"	29,10	32,00	0,043	● 35069
1/4"	29,10	33,00	0,080	● 29983
3/8"	34,00	35,50	0,110	● 29950
1/2"	37,50	37,80	0,150	● 29951
3/4"	44,50	41,00	0,200	● 29952
1"	53,50	49,00	0,290	● 29953
1 1/4"	64,00	52,00	0,420	● 29954
1 1/2"	71,50	56,30	0,520	● 29955
2"	85,50	63,00	0,795	● 29967
2 1/2"	108,50	71,30	1,295	● 29988
3"	123,50	79,00	1,880	● 29971



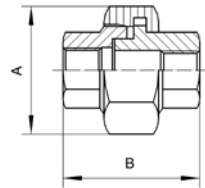
Verschraubung - 411

ähnl. DIN EN 10241, flach dichtend, beidseits Innengewinde,
Rp-DIN EN 10226-1 / ISO 7-1

Union - 411

similar to DIN EN 10241, flat sealing, female thread on both sides,
Rp-DIN EN 10226-1 / ISO 7-1

Abm./Dim.	A mm	B mm	ÜWM	Kg/Stk./pc	EN 1.4571
					Artikel-Nr. Article-No
1/4"	27,00	40,00	5/8"	0,081	● 35337
3/8"	32,00	46,00	3/4"	0,106	● 35343
1/2"	41,00	51,00	1"	0,195	● 35336
3/4"	50,00	57,00	1 1/4"	0,348	● 35342
1"	55,00	64,00	1 1/2"	0,410	● 35340
1 1/4"	70,00	70,00	2"	0,631	● 35339
1 1/2"	75,00	19,00	2 1/4"	0,852	● 35338
2"	90,00	89,00	2 3/4"	1,400	● 35341



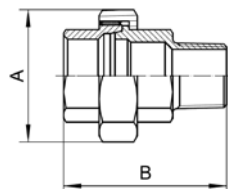
Verschraubung - 311 I/A

ähnl. DIN EN 10241 / ISO 4144 (DIN 2993), flach dichtend,
Innen-/Außen-Gewinde, Rp/R-DIN EN 10226-1 / ISO 7-1

Union - 311 f/m

similar to DIN EN 10241 / ISO 4144 (DIN2993), flat sealing,
female/male thread, Rp/R-DIN EN 10226-1 / ISO 7-1

Abm./Dim.	A mm	B mm	Kg/Paar/pc	AISI 316
				Artikel-Nr. Article-No
1/4"	29,10	45,00	0,090	● 29975
3/8"	34,00	50,50	0,127	● 29976
1/2"	37,50	53,50	0,180	● 29977
3/4"	44,50	61,50	0,220	● 29978
1"	53,50	70,40	0,340	● 29979
1 1/4"	64,00	75,80	0,480	● 29980
1 1/2"	71,50	82,40	0,590	● 29981
2"	85,50	91,20	1,020	● 29982
2 1/2"	108,50	103,70	1,820	● 29968
3"	123,30	110,00	2,010	● 29969



Verschraubung - 411 I/A

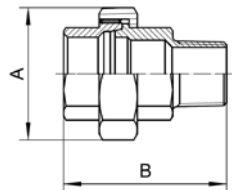
ähnl. DIN EN 10241, flach dichtend, Innen-/Außengewinde,
Rp/R-DIN EN 10226-1 / ISO 7-1

Union - 411 f/m

similar to DIN EN 10241, flat sealing, female/male thread,
Rp/R-DIN EN 10226-1 / ISO 7-1

Abm./Dim.	A mm	B mm	ÜWM	Kg/Stk./pc	EN 1.4571
1/4"	27,00	40,00	5/8"	0,097	● 35353
3/8"	32,00	46,00	3/4"	0,140	● 35359
1/2"	41,00	54,00	1"	0,265	● 35352
3/4"	50,00	60,00	1 1/4"	0,410	● 35358
1"	55,00	66,00	1 1/2"	0,544	● 35356
1 1/4"	70,00	72,00	2"	0,924	● 35355
1 1/2"	75,00	81,00	2 1/4"	1,200	● 35354
2"	90,00	91,00	2 3/4"	1,650	● 35357

Artikel-Nr.
Article-No



Verschraubung - 411 A/A

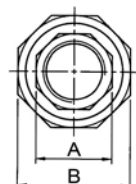
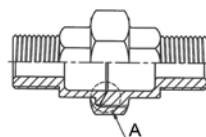
ähnl. DIN EN 10241, flach dichtend, Außen-/Außengewinde,
R-DIN EN 10226-1 / ISO 7-1

Union - 411 m/m

similar to EN 10241, flat sealing, male/male thread,
R-DIN EN 10226-1 / ISO 7-1

Abm./Dim.	A mm	B mm	ÜWM	Kg/Stk./pc	EN 1.4571
3/8"	27,00	46,00	5/8"	0,125	● 34556
1/2"	32,00	54,00	3/4"	0,230	● 34557
3/4"	41,00	60,00	1"	0,350	● 34558
1"	50,00	66,00	1 1/4"	0,544	● 33603

Artikel-Nr.
Article-No



Verschraubung - 311 S

ähnl. DIN EN 10241 / ISO 4144,

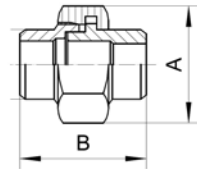
flach dichtend, Schweißenden

Union - 311 S

similar to DIN EN 10241 / ISO 4144,

flat sealing, weld-on ends

Abm./Dim.	A mm	B mm	Kg/Paar/pc	AISI 316	Artikel-Nr. Article-No.
1/4"	29,10	37,20	0,078	● 29932	
3/8"	34,00	38,80	0,112	● 29960	
1/2"	37,50	41,20	0,147	● 29986	
3/4"	44,50	49,60	0,210	● 29985	
1"	53,50	51,20	0,306	● 29957	
1 1/4"	64,00	55,00	0,400	● 29942	
1 1/2"	71,50	58,60	0,500	● 29987	
2"	85,50	59,60	0,885	● 29972	
2 1/2"	108,50	91,20	1,355	● 29933	
3"	123,30	104,30	1,965	● 29958	



Verschraubung - 411 CHS

ähnl. EN 10241 / Chemienorm,

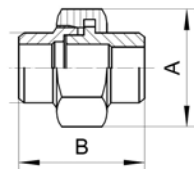
flach dichtend, Schweißenden

Union - 411 CHS

similar to EN 10241 / chemical norm,

flat sealing, weld-on ends

Abm./Dim.	A mm	B mm	ØD mm	ÜWM	Kg/Stk./pc	EN 1.4571	Artikel-Nr. Article-No.
1/4"	27,00	40,00	13,50	1/2"	0,059	● 35345	
3/8"	27,00	46,00	18,00	4/8"	0,082	● 35351	
1/2"	32,00	54,00	21,50	3/4"	0,119	● 35344	
3/4"	41,00	60,00	27,00	1"	0,213	● 35350	
1"	50,00	66,00	34,00	1 1/4"	0,342	● 35348	
1 1/4"	55,00	72,00	42,40	1 1/2"	0,517	● 35347	
1 1/2"	70,00	81,00	48,50	2"	0,692	● 35346	
2"	75,00	91,00	60,50	M70x2	0,872	● 35349	



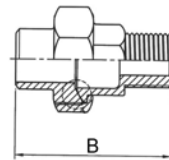
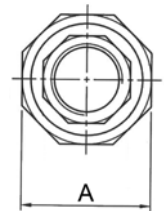
Verschraubung - 311 S/A

ähnl. DIN EN 10241 / ISO 4144, flach dichtend, Schweißende,
Außengewinde, R-DIN EN 10226-1 / ISO 7-1

Union - 311 S/A

similar to DIN EN 10241 / ISO 4144, flat sealing, weld-on end,
male thread, R-DIN EN 10226-1 / ISO 7-1

Abm./Dim.	A mm	B mm	Kg/Paar/pc	AISI 316	Artikel-Nr. Article-No.
1/4"	46,40	17,20	0,093	● 35071	
3/8"	47,70	20,30	0,180	● 35077	
1/2"	53,00	26,00	0,229	● 35070	
3/4"	60,00	30,60	0,266	● 35076	
1"	66,00	38,00	0,478	● 35074	
1 1/4"	72,00	47,30	0,712	● 35073	
1 1/2"	73,00	53,00	1,010	● 35072	
2"	77,60	66,00	1,250	● 35075	



Verschraubung - 311 S/I

ähnl. DIN EN 10241 / ISO 4144, flach dichtend, Schweißende,
Innengewinde, Rp-DIN EN 10226-1 / ISO 7-1

Union - 311 S/f

similar to DIN EN 10241 / ISO 4144, flat sealing, weld-on end,
female thread, Rp-DIN EN 10226-1 / ISO 7-1

Abm./Dim.	A mm	B mm	Kg/Paar/pc	AISI 316	Artikel-Nr. Article-No.
1/4"	35,00	28,00	0,084	● 35079	
3/8"	38,00	34,00	0,187	● 35085	
1/2"	40,00	39,20	0,203	● 35078	
3/4"	45,70	46,00	0,263	● 35084	
1"	50,00	55,00	0,356	● 35082	
1 1/4"	56,00	63,50	0,596	● 35081	
1 1/2"	57,00	71,00	0,722	● 35080	
2"	58,60	85,00	1,050	● 35083	

