

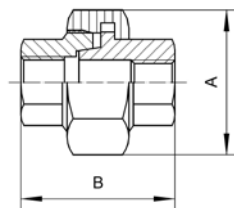
Verschraubung - 312 I/I

ähnl. DIN EN 10241 / ISO 4144 (DIN 2993), konisch dichtend,
Innen/Innen-Gewinde, Rp-DIN EN 10226-1 / ISO 7-1

Union - 312 f/f

similar to DIN EN 10241 / ISO 4144 (DIN2993), conical sealing,
female/female thread, Rp-DIN EN 10226-1 / ISO 7-1

Abm./Dim.	A mm	B mm	Kg/Paar/pc	AISI 316
				Artikel-Nr. Article-No.
1/8"	29,10	25,00	0,043	● 35086
1/4"	29,10	33,90	0,023	● 24217
3/8"	34,00	36,00	0,028	● 24218
1/2"	37,50	39,00	0,047	● 24219
3/4"	44,50	41,00	0,073	● 24220
1"	53,50	50,00	0,110	● 24221
1 1/4"	64,00	51,00	0,169	● 24222
1 1/2"	71,50	57,00	0,207	● 24223
2"	85,50	62,00	0,305	● 24224
2 1/2"	101,00	68,50	0,479	● 24225
3"	117,00	78,00	0,636	● 24226



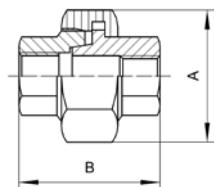
Verschraubung - 412

ähnl. EN 10241, konisch dichtend, beidseits Innengewinde,
Rp-DIN EN 10226-1 / ISO 7-1

Union - 412

similar to EN 10241, conical sealing, female thread on both sides,
Rp-DIN EN 10226-1 / ISO 7-1

Abm./Dim.	A mm	B mm	ÜWM	Kg/Stk./pc	EN 1.4571
					Artikel-Nr. Article-No.
1/4"	27,00	40,00	5/8"	0,081	● 35361
3/8"	32,00	46,00	3/4"	0,118	● 35367
1/2"	41,00	54,00	1"	0,223	● 35360
3/4"	50,00	50,00	1 1/4"	0,344	● 35366
1"	55,00	66,00	1 1/2"	0,456	● 35364
1 1/4"	70,00	72,00	2"	0,796	● 35363
1 1/2"	75,00	81,00	2 1/4"	0,954	● 35362
2"	90,00	91,00	2 3/4"	1,400	● 35365



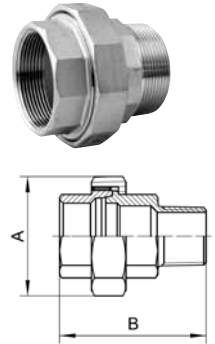
Verschraubung - 312 I/A

ähnl. DIN EN 10241 / ISO 4144 (DIN 2993), konisch dichtend,
Innen-/Außen-Gewinde, Rp/R-DIN EN 10226-1 / ISO 7-1

Union - 312 f/m

similar to DIN EN 10241 / ISO 4144 (DIN 2993), conical sealing,
female/male thread, Rp/R-DIN EN 10226-1 / ISO 7-1

Abm./Dim.	A mm	B mm	Kg/Paar/pc	AISI 316	Artikel-Nr. Article-No.
1/8"	29,10	40,60	0,114	● 35087	
1/4"	29,10	36,40	0,074	● 24247	
3/8"	34,00	37,20	0,111	● 24248	
1/2"	37,50	39,10	0,159	● 24249	
3/4"	44,50	41,00	0,222	● 24250	
1"	53,50	46,00	0,337	● 24251	
1 1/4"	64,00	52,80	0,453	● 24252	
1 1/2"	71,50	53,00	0,551	● 24253	
2"	85,50	55,30	0,865	● 24254	
2 1/2"	108,50	88,00	1,585	● 24255	
3"	123,30	104,30	2,265	● 24256	



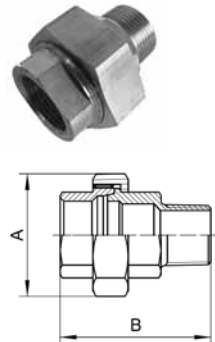
Verschraubung - 412 I/A

ähnl. EN 10241, konisch dichtend, Innen-/Außengewinde,
Rp/R-DIN EN 10226-1 / ISO 7-1

Union - 412 f/m

similar to EN 10241, conical sealing, female/male thread,
Rp/R-DIN EN 10226-1 / ISO 7-1

Abm./Dim.	A mm	B mm	ÜWM	Kg/Stk./pc	EN 1.4571	Artikel-Nr. Article-No
1/4"	27,00	40,00	5/8"	0,097	● 35376	
3/8"	32,00	46,00	3/4"	0,144	● 35382	
1/2"	41,00	54,00	1"	0,275	● 35375	
3/4"	50,00	60,00	1 1/4"	0,410	● 35381	
1"	55,00	66,00	1 1/2"	0,564	● 35379	
1 1/4"	70,00	72,00	2"	0,924	● 35378	
1 1/2"	75,00	81,00	2 1/4"	1,250	● 35377	
2"	90,00	91,00	2 3/4"	1,800	● 35380	



Verschraubung - 412 A/A

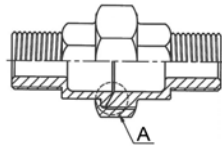
ähnl. EN 10241, konisch dichtend, Außen-/Außengewinde,
R-DIN EN 10226-1 / ISO 7-1

Union - 412 m/m

similar to EN 10241, conical sealing, male/male thread,
R-DIN EN 10226-1 / ISO 7-1

Abm./Dim.	A mm	B mm	ÜWM	Kg/Stk./pc	EN 1.4571
3/8"	27,00	46,00	5/8"	0,125	● 34559
1/2"	32,00	54,00	3/4"	0,280	● 35368
3/4"	41,00	60,00	1"	0,350	● 34560
1"	50,00	66,00	1 1/4"	0,480	● 34561
1 1/2"	55,00	72,00	2"	0,900	● 34562

Artikel-Nr.
Article-No



Verschraubung - 312 S

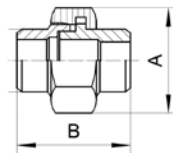
ähnl. DIN EN 10241 / ISO 4144, konisch dichtend,
Schweißenden

Union - 312 S

similar to DIN EN 10241 / ISO 4144, conical sealing,
weld-on ends

Abm./Dim.	A mm	B mm	Kg/Paar/pc	AISI 316
1/4"	29,10	46,00	0,078	● 29956
3/8"	34,00	47,50	0,105	● 24281
1/2"	37,50	53,60	0,146	● 24282
3/4"	44,50	58,30	0,205	● 24283
1"	53,50	69,00	0,316	● 24284
1 1/4"	64,00	71,10	0,442	● 24285
1 1/2"	71,50	80,00	0,533	● 24286
2"	85,50	88,20	0,733	● 24287
2 1/2"	108,50	101,00	1,302	● 24288
3"	123,30	108,00	1,965	● 29959

Artikel-Nr.
Article-No.



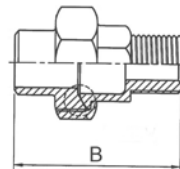
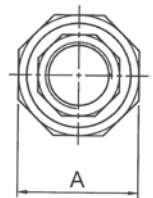
Verschraubung - 312 S/A

ähnl. DIN EN 10241 / ISO 4144, konisch dichtend, Schweißenden,
Außengewinde, R-DIN EN 10226-1/ISO 7-1

Union - 312 S/A

similar to DIN EN 10241 / ISO 4144, conical sealing, weld-on ends,
male thread, R-DIN EN 10226-1/ISO7-1

Abm./Dim.	A mm	B mm	Kg/Paar/pc	AISI 316
				Artikel-Nr. Article-No.
1/4"	46,40	17,20	0,108	● 35090
3/8"	47,70	20,30	0,144	● 35095
1/2"	53,00	26,00	0,190	● 35089
3/4"	60,00	30,60	0,281	● 35094
1"	66,00	38,00	0,432	● 35088
1 1/4"	72,00	47,30	0,862	● 35092
1 1/2"	73,00	53,00	0,868	● 35091
2"	77,60	66,00	1,300	● 35093



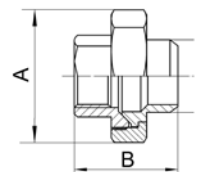
Verschraubung - 312 S/I

ähnl. DIN EN 10241 / ISO 4144, konisch dichtend, Schweißende,
Innengewinde, Rp-DIN EN 10226-1 / ISO 7-1

Union - 312 S/I

similar to DIN EN 10241 / ISO 4144, conical sealing, weld-on end,
female thread, Rp-DIN EN 10226-1 / ISO 7-1

Abm./Dim.	A mm	B mm	Kg/Paar/pc	AISI 316
				Artikel-Nr. Article-No.
1/4"	35,00	28,00	0,093	● 35097
3/8"	38,00	34,00	0,142	● 35103
1/2"	40,00	39,20	0,200	● 35096
3/4"	45,70	46,00	0,273	● 35102
1"	50,00	55,00	0,390	● 35100
1 1/4"	56,00	63,50	0,606	● 35099
1 1/2"	57,00	71,00	0,722	● 35098
2"	58,60	85,00	1,100	● 35101



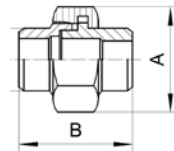
Verschraubung - 412 S

ähnl. DIN EN 10241, konisch dichtend,
Schweißenden

Union - 412 S

similar to DIN EN 10241, conical sealing,
weld-on ends

Abm./Dim.	A mm	B mm	ØD mm	ÜWM	Kg/Stk./pc	EN 1.4571	Artikel-Nr. Article-No
1/8"	24,00	37,00	10,50	3/8"	0,043		● 35385
1/4"	27,00	40,00	13,50	1/2"	0,076		● 35384
3/8"	27,00	46,00	18,00	5/8"	0,074		● 35391
1/2"	32,00	54,00	21,50	3/4"	0,109		● 35383
3/4"	41,00	60,00	27,00	1"	0,198		● 35390
1"	50,00	66,00	34,00	1 1/4"	0,296		● 35388
1 1/4"	55,00	72,00	42,40	1 1/2"	0,472		● 35387
1 1/2"	70,00	81,00	48,50	2"	0,702		● 35386
2"	75,00	91,00	60,50	M70x2	1,100		● 35389



Verschraubung - 412 CHS

ähnl. EN 10241 / Chemienorm,
konisch dichtend, Schweißenden

Union - 412 CHS

similar to EN 10241 / Chemical norm,
conical sealing, weld-on ends

Abm./Dim.	A mm	B mm	ØD mm	ÜWM	Kg/Stk./pc	EN 1.4571	Artikel-Nr. Article-No
3/8"	27,00	46,00	18,00	5/8"	0,074		● 35374
1/2"	32,00	54,00	21,50	3/4"	0,109		● 35369
3/4"	41,00	60,00	27,00	1"	0,198		● 35373
1"	50,00	66,00	34,00	1 1/4"	0,296		● 35371
1 1/2"	70,00	81,00	48,50	2"	0,702		● 35370
2"	75,00	91,00	60,50	M70x2	1,100		● 35372

