

Vierkantstopfen - 329

ähnl. DIN EN 10241 / ISO 4144 (DIN 2991),

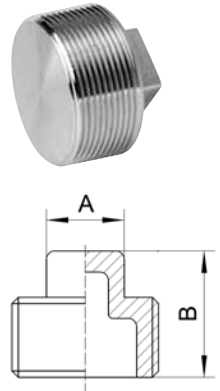
R-DIN EN 10226-1 / ISO 7-1

Plug squared - 329

similar to DIN EN 10241 / ISO 4144 (DIN 2991),

R-DIN EN 10226-1 / ISO 7-1

Abm./Dim.	A mm	B mm	Kg/Stk/pc	AISI 316
				Artikel-Nr. Article-No.
1/4"	9,00	19,00	0,015	● 24001
3/8"	8,00	15,00	0,017	● 24002
1/2"	10,00	18,50	0,028	● 24003
3/4"	14,00	21,00	0,044	● 24004
1"	17,00	24,00	0,075	● 24005
1 1/4"	20,00	28,00	0,115	● 24006
1 1/2"	23,00	28,00	0,130	● 24007
2"	28,00	34,00	0,215	● 24008
2 1/2"	36,00	38,50	0,344	● 24009
3"	40,00	41,50	0,524	● 24010
4"	52,00	51,50	0,790	● 29963



Vierkantstopfen - 429

ohne Rand, ähnl. DIN EN 10241,

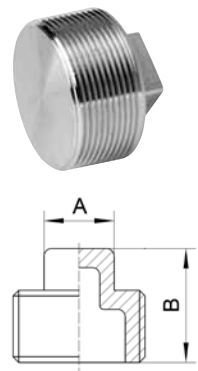
R-DIN EN 10226-1 / ISO 7-1

Plug squared - 429

without edges, similar to DIN EN 10241,

R-DIN EN 10226-1 / ISO 7-1

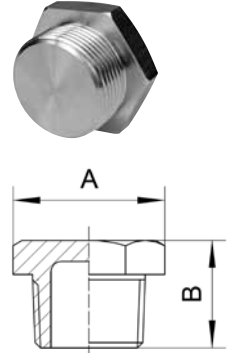
Abm./Dim.	A mm	B mm	Kg/Stk/pc	EN 1.4571
				Artikel-Nr. Article-No.
1/8"	7,00	14,00	0,010	● 35438
1/4"	8,00	17,00	0,017	● 35437
3/8"	10,00	18,00	0,030	● 35444
1/2"	12,00	22,00	0,059	● 35436
3/4"	14,00	26,00	0,084	● 35443
1"	17,00	26,00	0,174	● 35441
1 1/4"	19,00	34,00	0,285	● 35440
1 1/2"	22,00	35,00	0,378	● 35439
2"	24,00	38,00	0,662	● 35442



Sechskantstopfen - 330  
 ähnl. DIN EN 10241 / ISO 4144,  
 R-DIN EN 10226-1 / ISO 7-1

Hexagon plug - 330  
 similar to DIN EN 10241 / ISO 4144,  
 R-DIN EN 10226-1 / ISO 7-1

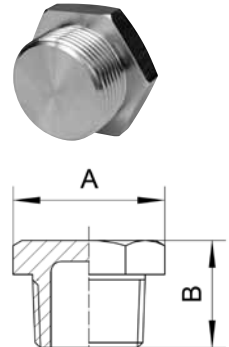
Abm./Dim.	A mm	B mm	Kg/Stk/pc	AISI 316
				Artikel-Nr. Article-No.
1/8"	12,00	12,00	0,012	● 24016
1/4"	14,50	14,50	0,022	● 24017
3/8"	18,00	16,00	0,022	● 24018
1/2"	22,00	19,50	0,036	● 24019
3/4"	28,00	22,00	0,056	● 24020
1"	35,00	24,80	0,087	● 24021
1 1/4"	44,00	28,80	0,140	● 24022
1 1/2"	50,00	28,80	0,185	● 24023
2"	62,00	33,50	0,280	● 24024
2 1/2"	78,00	34,00	0,550	● 24025
3"	91,00	37,50	1,350	● 35127
4"	116,00	44,00	1,440	● 29943



Sechskantstopfen - 430  
 ähnl. DIN EN 10241,  
 R-DIN EN 10226-1 / ISO 7-1

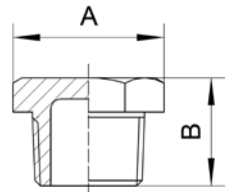
Hexagon plug - 430  
 similar to DIN EN 10241,  
 R-DIN EN 10226-1 / ISO 7-1

Abm./Dim.	A mm	B mm	Kg/Stk/pc	EN 1.4571
				Artikel-Nr. Article-No.
1/8"	12,00	13,00	0,010	● 35447
1/4"	14,00	15,00	0,017	● 35446
3/8"	19,00	17,00	0,033	● 35453
1/2"	22,00	20,00	0,054	● 35445
3/4"	27,00	24,00	0,102	● 35452
1"	36,00	27,00	0,187	● 35450
1 1/4"	46,00	31,00	0,358	● 35449
1 1/2"	50,00	33,00	0,484	● 35448
2"	65,00	38,00	0,902	● 35451



Sechskantstopfen - 430 Z  
 ähnl. DIN EN 10241, mit zylindrischem Gewinde,  
 G-DIN EN ISO 228-1  
 Hexagon plug - 430 Z  
 similar to DIN EN 10241, with cylindric thread,  
 G-DIN EN ISO 228-1

Abm./Dim.	A mm	B mm	Kg/Stk/pc	EN 1.4571	Artikel-Nr. Article-No.
G1/4"	SW 17	12,00	0,017		● 761120
G1/2"	SW 27	22,00	0,540		● 761121



Verschlusschraube - 431  
 DIN 910, mit zylindrischem Gewinde,  
 G-DIN EN ISO 228-1  
 Screw plug - 431  
 DIN 910, with cylindrical thread,  
 G-DIN EN ISO 228-1

Abm./Dim.	SW mm	L mm	Kg/Stk/pc	EN 1.4571	Artikel-Nr. Article-No.
1/8"	10,00	17,00	0,012		● 35458
1/4"	13,00	21,00	0,024		● 35457
3/8"	17,00	21,00	0,038		● 35464
1/2"	19,00	26,00	0,068		● 35456
3/4"	24,00	30,00	0,123		● 35463
1"	27,00	32,00	0,197		● 35461
1 1/4"	30,00	33,00	0,298		● 35460
1 1/2"	30,00	33,00	0,366		● 35459
2"	36,00	40,00	0,674		● 35462

