

Winkel 90° - 301

ähnl. EN 10241 / ISO 4144 (DIN 2987), beidseitig Innengewinde,

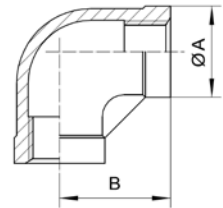
Rp-DIN EN 10226-1 / ISO 7-1

Elbow 90° - 301

similar to EN 10241 / ISO 4144 (DIN 2987), female thread on both sides,

Rp-DIN EN 10226-1 / ISO 7-1

| Abm./Dim. | A mm  | Kg/Stk/pc | AISI 316                   |
|-----------|-------|-----------|----------------------------|
|           | Ø     |           | Artikel-Nr.<br>Article-No. |
| 1/8"      | 14,00 | 0,023     | ● 10236                    |
| 1/4"      | 18,50 | 0,031     | ● 10237                    |
| 3/8"      | 20,80 | 0,046     | ● 10238                    |
| 1/2"      | 25,00 | 0,060     | ● 10239                    |
| 3/4"      | 27,50 | 0,084     | ● 10240                    |
| 1"        | 33,00 | 0,160     | ● 10241                    |
| 1 1/4"    | 39,50 | 0,215     | ● 10242                    |
| 1 1/2"    | 43,00 | 0,293     | ● 10243                    |
| 2"        | 52,00 | 0,480     | ● 10244                    |
| 2 1/2"    | 61,00 | 0,840     | ● 10245                    |
| 3"        | 70,50 | 1,224     | ● 10246                    |



Winkel 90° - 401

ähnl. DIN EN 10241 (DIN 2987), beidseitig Innengewinde,

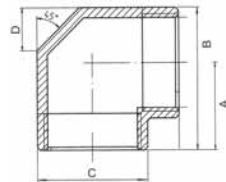
Rp-DIN EN 10226-1 / ISO 7-1

Elbow 90° - 401

similar to DIN EN 10241 (DIN 2987), female thread on both sides,

Rp-DIN EN 10226-1 / ISO 7-1

| Abm./Dim. | A mm  | B mm  | C mm  | D mm  | Kg/Stk./pc | EN 1.4571                  |
|-----------|-------|-------|-------|-------|------------|----------------------------|
|           |       |       |       |       |            | Artikel-Nr.<br>Article-No. |
| 1/4"      | 21,00 | 30,00 | 18,00 | 4,00  | 0,067      | ● 35171                    |
| 3/8"      | 24,50 | 35,00 | 21,00 | 5,00  | 0,094      | ● 35177                    |
| 1/2"      | 28,00 | 41,00 | 27,00 | 6,00  | 0,177      | ● 35170                    |
| 3/4"      | 33,00 | 50,00 | 34,00 | 10,00 | 0,349      | ● 35176                    |
| 1"        | 38,00 | 58,00 | 40,00 | 19,00 | 0,507      | ● 35174                    |
| 1 1/4"    | 45,00 | 70,00 | 50,00 | 20,00 | 0,857      | ● 35173                    |
| 1 1/2"    | 50,00 | 78,50 | 57,00 | 22,00 | 1,247      | ● 35172                    |
| 2"        | 55,00 | 90,00 | 70,00 | 27,00 | 1,862      | ● 35175                    |



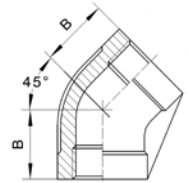
Winkel 45° - 303

ähnl. EN 10241 / ISO 4144 (DIN 2987), beidseitig Innengewinde,  
Rp-DIN EN 10226-1 / ISO 7-1

Elbow 45° - 303

similar to EN 10241 / ISO 4144 (DIN 2987), female thread on both sides,  
Rp-DIN EN 10226-1 / ISO 7-1

| Abm./Dim. | B mm  | Kg/Stk/pc | AISI 316                   |
|-----------|-------|-----------|----------------------------|
|           |       |           | Artikel-Nr.<br>Article-No. |
| 1/4"      | 12,00 | 0,072     | ● 35034                    |
| 3/8"      | 15,50 | 0,070     | ● 35040                    |
| 1/2"      | 17,00 | 0,114     | ● 35033                    |
| 3/4"      | 19,00 | 0,178     | ● 35039                    |
| 1"        | 21,50 | 0,294     | ● 35037                    |
| 1 1/4"    | 25,00 | 0,368     | ● 35036                    |
| 1 1/2"    | 28,50 | 0,506     | ● 35035                    |
| 2"        | 31,00 | 0,812     | ● 35038                    |



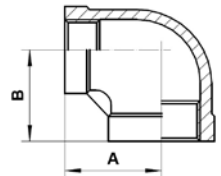
Reduzier-Winkel 90° - 301R

ähnl. EN 10241 / ISO 4144 (DIN 2987), beidseitig Innengewinde,  
Rp-DIN EN 10226-1 / ISO 7-1

Elbow 90° reduced - 301R

similar to EN 10241 / ISO 4144 (DIN 2987), female thread on both sides,  
Rp-DIN EN 10226-1 / ISO 7-1

| Abm./Dim.       | A mm  | B mm  | Kg/Stk/pc | AISI 316                   |
|-----------------|-------|-------|-----------|----------------------------|
|                 |       |       |           | Artikel-Nr.<br>Article-No. |
| 1/4" x 1/8"     | 19,30 | 18,80 | 0,031     | ● 35013                    |
| 3/8" x 1/4"     | 21,00 | 20,20 | 0,060     | ● 35024                    |
| 1/2" x 3/8"     | 39,00 | 25,50 | 0,105     | ● 35012                    |
| 3/4" x 3/8"     | 26,70 | 25,00 | 0,125     | ● 35023                    |
| 3/4" x 1/2"     | 28,80 | 29,00 | 0,244     | ● 35022                    |
| 1" x 1/2"       | 33,70 | 31,00 | 0,221     | ● 35018                    |
| 1" x 3/4"       | 35,80 | 32,20 | 0,187     | ● 35019                    |
| 1 1/4" x 3/4"   | 41,10 | 36,80 | 0,267     | ● 35017                    |
| 1 1/4" x 1"     | 42,40 | 40,10 | 0,370     | ● 35016                    |
| 1 1/2" x 3/4"   | 45,70 | 38,60 | 0,836     | ● 35015                    |
| 1 1/2" x 1 1/4" | 47,80 | 46,20 | 0,746     | ● 35014                    |
| 2" x 1 1/4"     | 54,60 | 48,70 | 1,250     | ● 35021                    |
| 2" x 1 1/2"     | 54,90 | 51,30 | 1,300     | ● 35020                    |



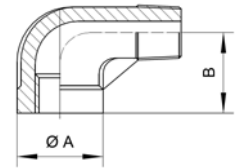
Winkel 90° - 304

ähnl. EN 10241 / ISO 4144 (DIN 2987), Innen-/Außengewinde,  
Rp/R-DIN EN 10226-1 / ISO 7-1

Elbow 90° 304

similar to EN 10241 / ISO 4144 (DIN 2987), female/male thread,  
Rp/R-DIN EN 10226-1 / ISO 7-1

| Abm./Dim. | A mm  | B mm   | Kg/Paar/pc | AISI 316                   |
|-----------|-------|--------|------------|----------------------------|
|           |       |        |            | Artikel-Nr.<br>Article-No. |
| 1/8"      | 15,40 | 23,00  | 0,028      | ● 35041                    |
| 1/4"      | 17,60 | 27,00  | 0,028      | ● 24187                    |
| 3/8"      | 20,50 | 30,00  | 0,043      | ● 24188                    |
| 1/2"      | 20,50 | 30,00  | 0,057      | ● 24189                    |
| 3/4"      | 24,00 | 34,50  | 0,097      | ● 24190                    |
| 1"        | 30,00 | 39,50  | 0,143      | ● 24191                    |
| 1 1/4"    | 35,50 | 46,50  | 0,191      | ● 24192                    |
| 1 1/2"    | 38,50 | 49,50  | 0,283      | ● 24193                    |
| 2"        | 48,00 | 60,50  | 0,412      | ● 24194                    |
| 2 1/2"    | 62,50 | 87,00  | 0,900      | ● 24195                    |
| 3"        | 79,30 | 107,00 | 1,710      | ● 24196                    |



Winkel 90° - 404

ähnl. DIN EN 10241 (DIN 2987), Innen-/Außengewinde,  
Rp-DIN EN 10226-1 / ISO 7-1

Elbow 90° - 404,

similar to DIN EN 10241 (DIN 2987), female/male thread,  
Rp-DIN EN 10226-1 / ISO 7-1

| Abm./Dim. | A mm  | B mm  | C mm  | D mm  | Kg/Stk./pc | EN 1.4571                  |
|-----------|-------|-------|-------|-------|------------|----------------------------|
|           |       |       |       |       |            | Artikel-Nr.<br>Article-No. |
| 1/4"      | 21,00 | 30,00 | 18,00 | 4,00  | 0,083      | ● 35179                    |
| 3/8"      | 24,50 | 35,00 | 21,00 | 5,00  | 0,125      | ● 35185                    |
| 1/2"      | 28,00 | 41,00 | 27,00 | 6,00  | 0,219      | ● 35178                    |
| 3/4"      | 33,00 | 50,00 | 34,00 | 10,00 | 0,433      | ● 35184                    |
| 1"        | 38,00 | 58,00 | 40,00 | 19,00 | 0,679      | ● 35182                    |
| 1 1/4"    | 45,00 | 70,00 | 50,00 | 20,00 | 1,015      | ● 35181                    |
| 1 1/2"    | 50,00 | 78,50 | 57,00 | 22,00 | 1,694      | ● 35180                    |
| 2"        | 55,00 | 90,00 | 70,00 | 27,00 | 2,550      | ● 35183                    |

